



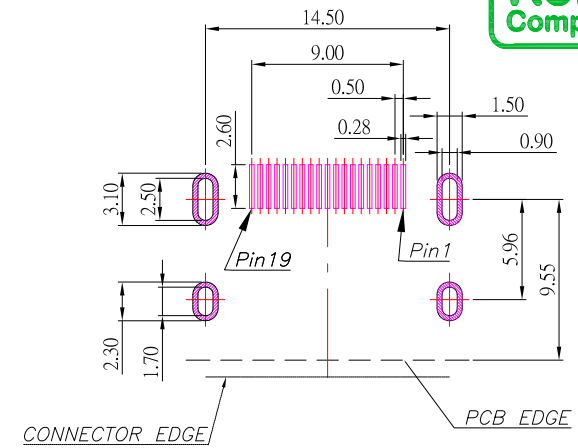
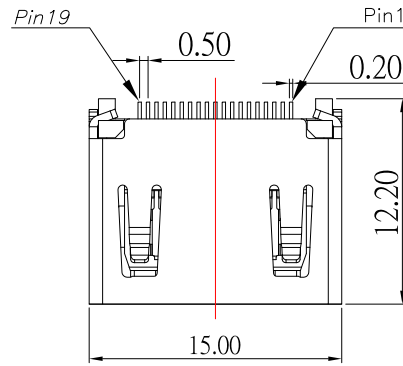
# HD2-19P-SND1xx-S297

外殼電鍍材質：

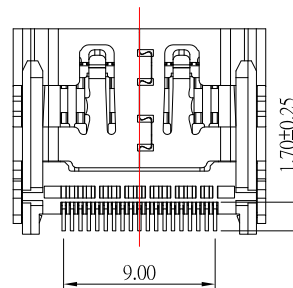
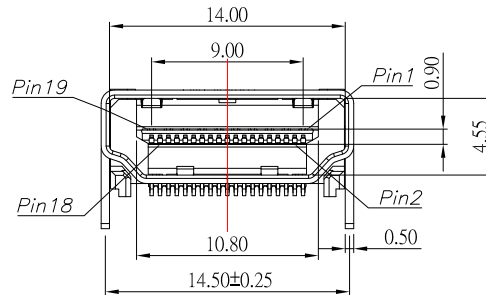
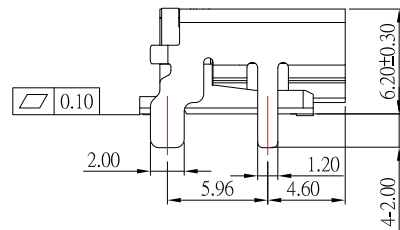
- Blank : Nickel
- G : Gold

端子接觸區厚度：

- Blank : 1u"
- 2 : 15u"
- 3 : 30u"



RECOMMENDED P.C.B. LAYOUT  
TOP VIEW



NOTE:

1.MATERIAL:

- 1.1 HOUSING: LCP, BLACK
- 1.2 CONTACT: BRASS
- 1.3 SHEEL: BRASS

2.PLATING :

- 2.1 CONTACT: PLATED GOLD IN MATING AREA ;  
TIN PLATED ON SOLDER BALLS ;  
NICKEL UNDER PLATED OVERALL
- 2.2 SHELL: NICKELOR GOLD UNDER PLATED SURFACE LAYER

3.MECHANICAL:

- 3.1 INSERTION FORCE: 4.5 Kgf MAX
- 3.2 WITHDRAWAL FORCE: 1.0 ~ 4.0 Kgf
- 3.3 LIFE: 10000 Cycles

4.ELECTRICAL:

- 4.1.RATING: 40V,0.5A
- 4.2 CONTACT RESISTANCE: 30 mΩ Max
- 4.3 INSULATION RESISTANCE: 100MΩ Min
- 4.4 DIELECTRIC WITHSTANDING VOLTAGE: 500V AC / minute
- 4.5 OPERATING TEMPERATURE: -25°C~ 85°C

| HDMI PIN ASSIGNMENT |                   |    |                   |
|---------------------|-------------------|----|-------------------|
| PIN                 | SIGNAL TYPE       | 11 | TMDS Clock Shield |
| 1                   | TMDS Data2+       | 12 | TMDS Clock-       |
| 2                   | TMDS Data2 Shield | 13 | CEC               |
| 3                   | TMDS Data2-       | 14 | Utility           |
| 4                   | TMDS Data1+       | 15 | SCL               |
| 5                   | TMDS Data1 Shield | 16 | SDA               |
| 6                   | TMDS Data1-       | 17 | DDC/CEC Ground    |
| 7                   | TMDS Data0+       | 18 | +5V Power         |
| 8                   | TMDS Data0 Shield | 19 | Hot Plug Detect   |
| 9                   | TMDS Data0-       |    |                   |
| 10                  | TMDS Clock+       |    |                   |



TOLERANCE UNLESS OTHERWISE STATED :

Up to 5 ±0.2  
Above 5 ~ 15 ±0.3  
Above 15 ~ 30 ±0.4  
Above 30 ~ 50 ±0.5  
Angle ±0.3°

3RD. ANGEL'S



UNITS

MM

|              |          |           |          |                       |
|--------------|----------|-----------|----------|-----------------------|
| DRAWN BY:    | DATE     | MAT'L     | TITLE    | CONNECTOR             |
| Jack Lu      | 05/11/23 |           |          |                       |
| CHECKED BY:  | DATE     | FINISH    | MODLE    | HDMI2.1 無耳無柱 四直腳腳長2.0 |
| Jacky Chen   | 05/11/23 |           |          |                       |
| APPROVED BY: | DATE     | SCALE     | DWG NO.  | HD2-19P-SND1xx-S297   |
| Tony Kao     | 05/11/23 | 1 : 1     |          |                       |
|              |          | SHEET NO. | PART NO. | HD2-19P-SND1xx-S297   |
|              |          | 1 of 1    |          |                       |

| ITEM NO. | DESCRIPTION | DRAWN | DATE   |
|----------|-------------|-------|--------|
| 2        | 新增PIN定義     | Jack  | 051123 |
| 1        | 新增鍍層選項      | Jack  | 070921 |